

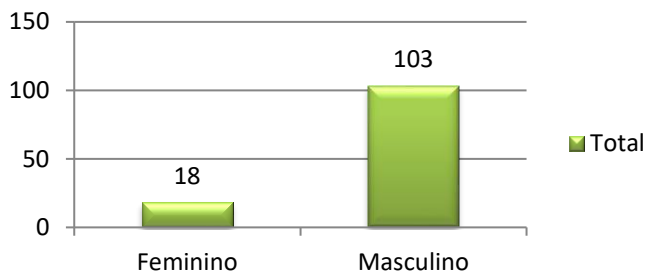
# MONITORAMENTO ARUJÁ

## ACIDENTE DE TRABALHO

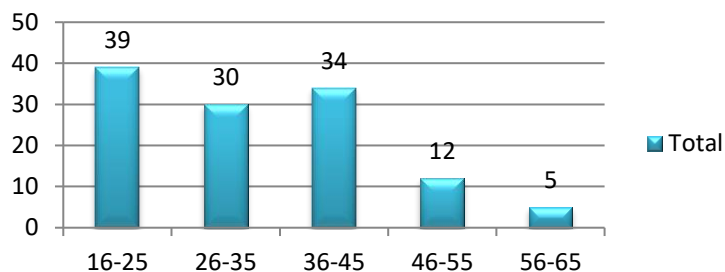
### 1º TRIMESTRE 2024

Casos	121
C.I. 100 hab.	1,21

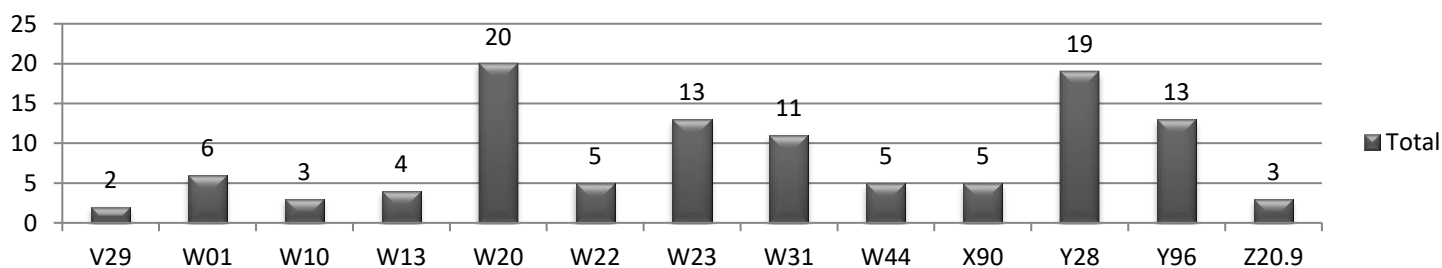
#### SEXO



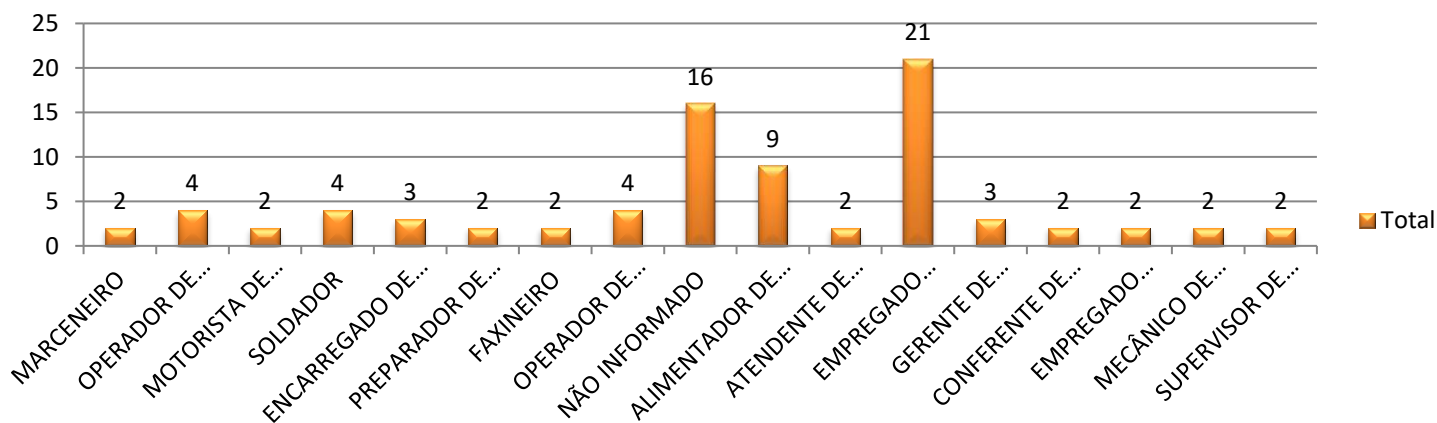
#### FAIXA ETÁRIA



#### CAUSAS DE ACIDENTES MAIS FREQUENTES (CID-10)



#### OCUPAÇÕES MAIS FREQUENTES (CBO)



#### UNIDADE DE SAÚDE

